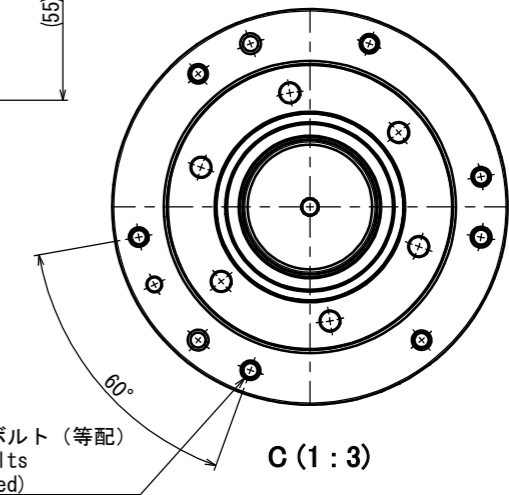
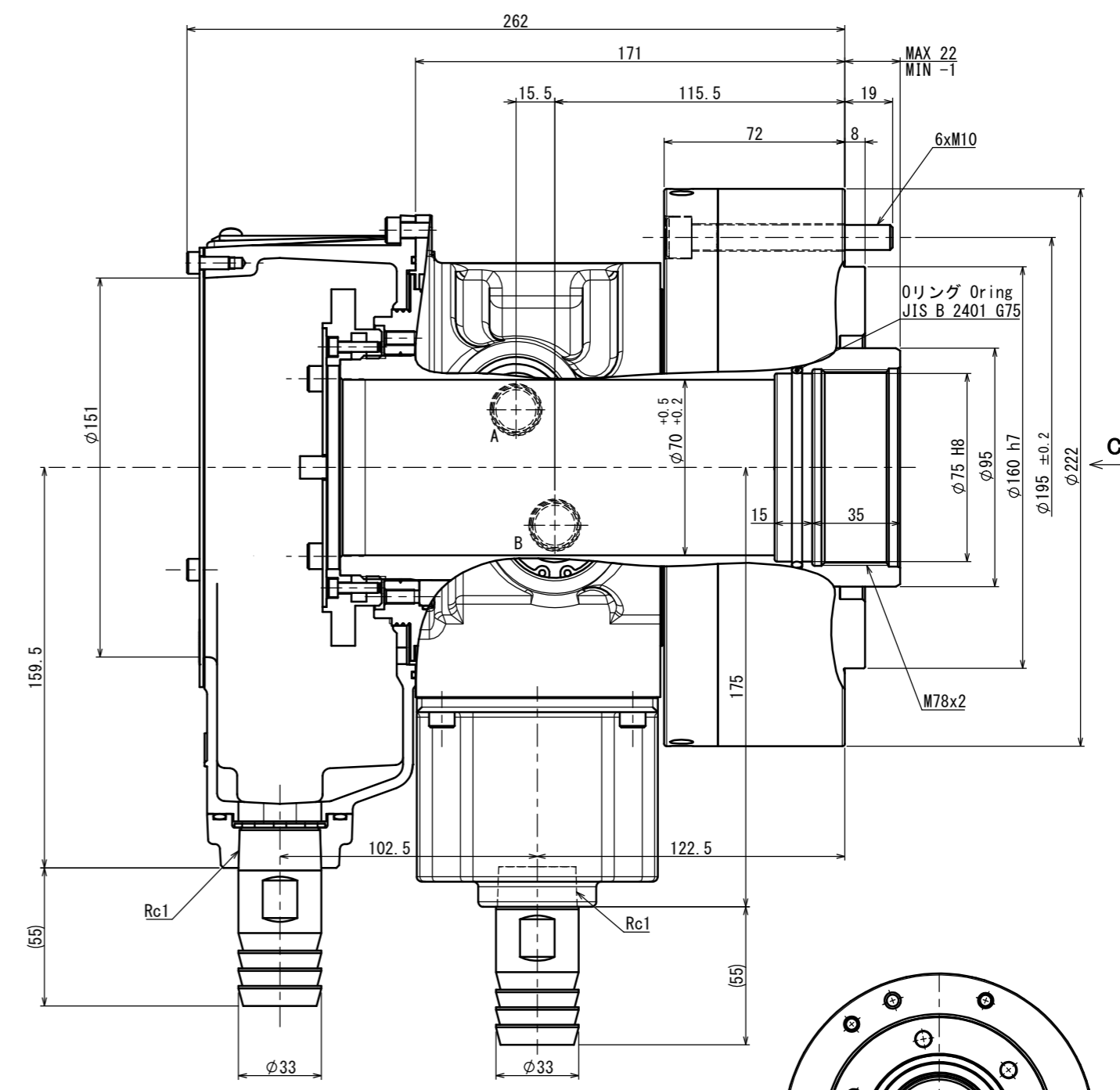
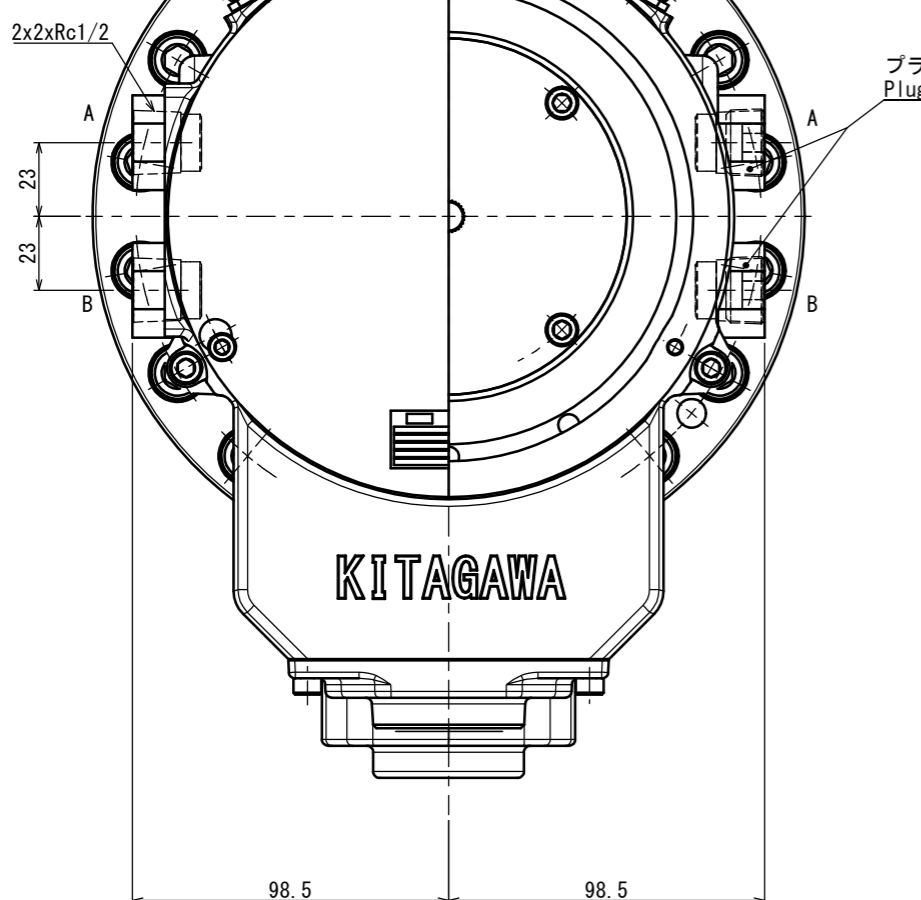
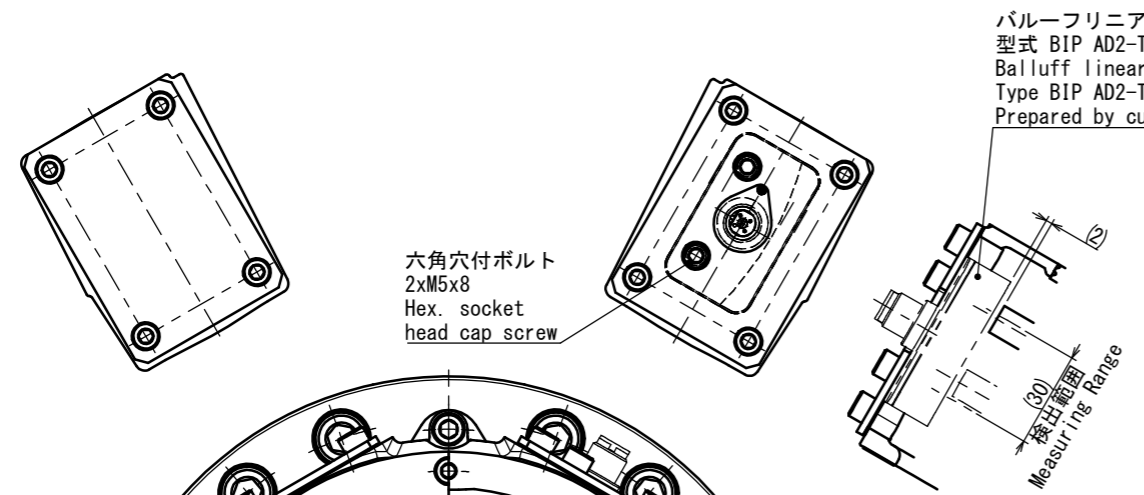


1 2 3 4 5 6 7 8



SPECIFICATIONS	
PISTON DIA	165 mm
PISTON STROKE	23 mm
PISTON THRUST (OIL PRESSURE 3.3 MPa)	PUSH 45.3 kN
	PULL 43.0 kN
PISTON THRUST (OIL PRESSURE 4.0 MPa)	PUSH 56.4 kN
	PULL 53.6 kN
MAX. OPERATION PRESSURE	4.0 MPa
MAX. SPEED	4500 min ⁻¹
MASS	27.5 kg
MOMENT OF INERTIA	0.086 kg · m ²
OIL LEAKAGE ISO VG 32 50°C 3.0MPa	4.3 L/min

For B-210 B-210用

BALLUFF LINEAR SENSOR SPECIFICATIONS	
型式 Type	BIP AD2-T030-02-S4
出力信号 Output voltage	0~10 V
検出範囲 Working range	0~30 mm
繰返し性能 Repeat accuracy	±100 μm
保存周囲温度 Ambient temperature	-25~85°C

Belong 付属品

- 1. 六角穴付ボルト M10x80 : 6ヶ
Hex. socket head cap screw M8x70 : 6pcs.
- 2. ホースニップル φ33 : 2ヶ
Hose nipple φ33 : 2pcs.
- 3. 六角穴付ボルト M5x8 : 2ヶ
Hex. socket head cap screw M5x8 : 2pcs.

CAREER		SCALE	TYPE	SR1670CBIP
APPROVAL	INSPECTION	DRW 3D	3:5	ROTARY HYDRAULIC CYLINDER
			3RD ANGLE	NAME SR1670CBIP OUTSIDE VIEW
Kitagawa Corporation		DATE	DRW NO.	61R298378 0 1/1 P

1 2 3 4 5 6 7 8