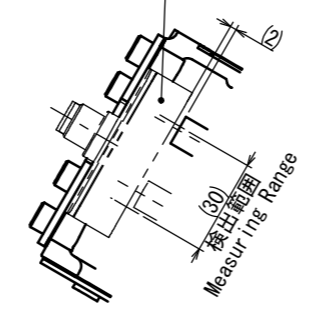
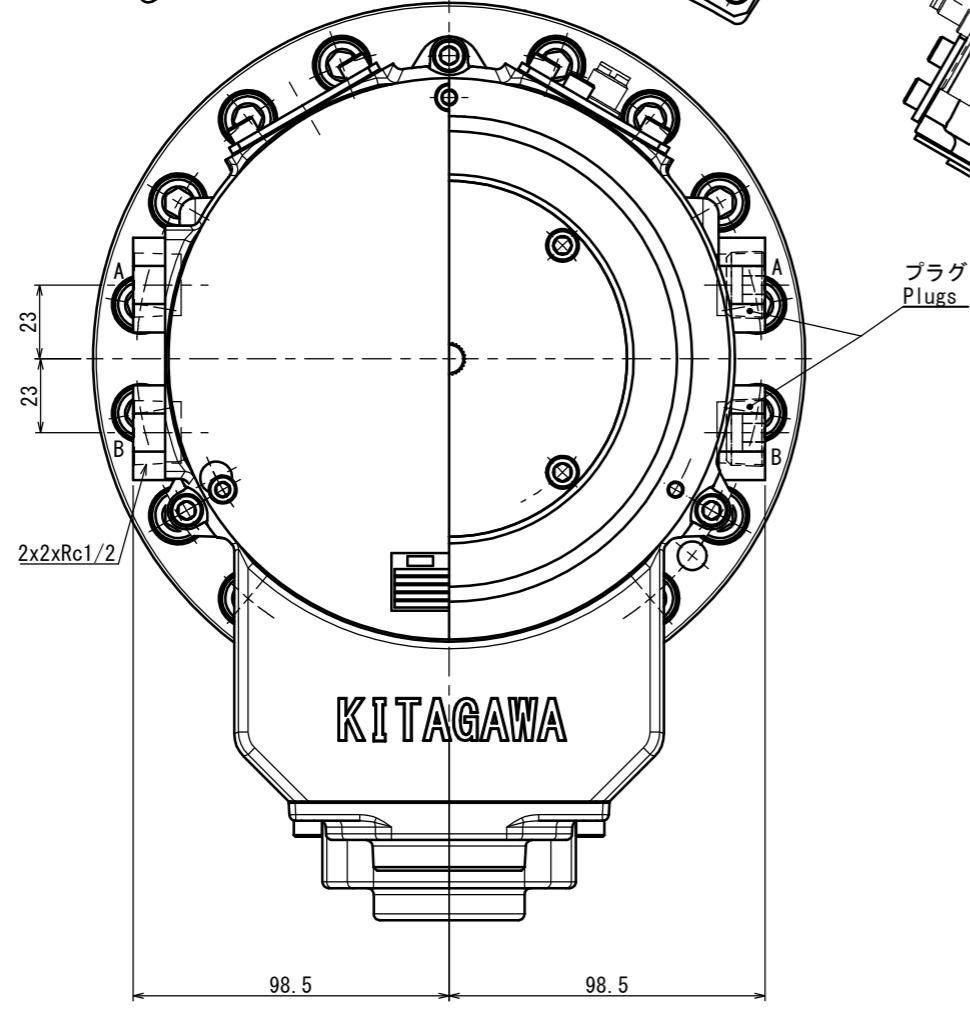


六角穴付ボルト
2xM5x8
Hex. socket
head cap screw

バルーフリニアセンサ お客様手配品
型式 BIP AD2-T030-02-S4
Balluff linear sensor
Type BIP AD2-T030-02-S4
Prepared by customer

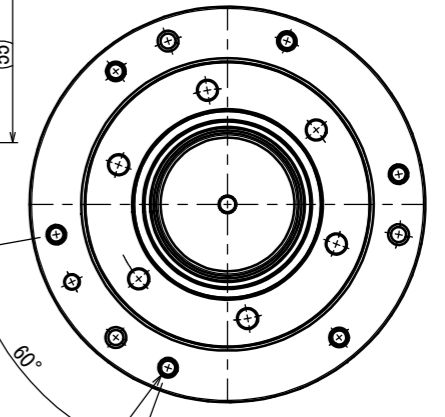
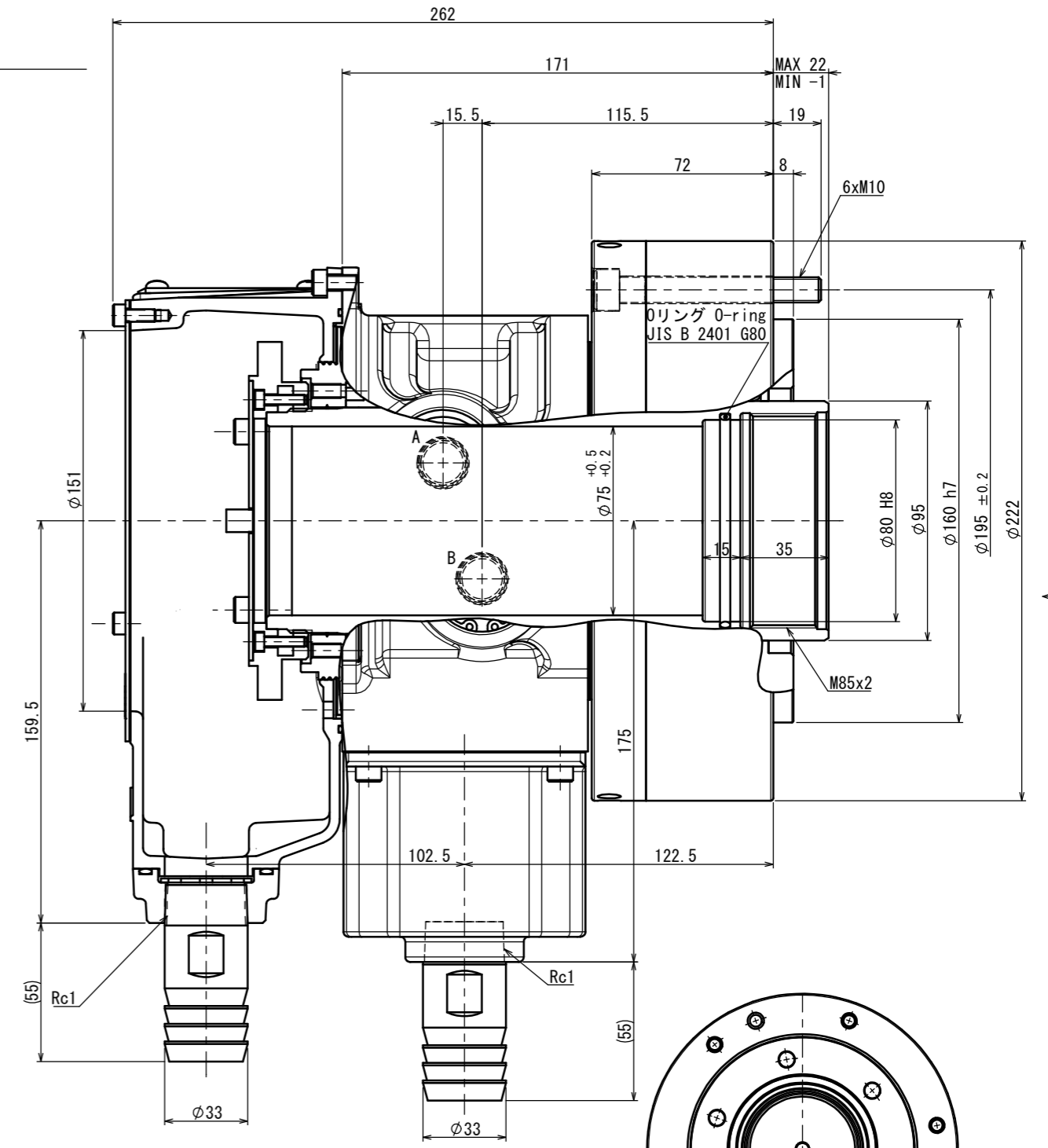


検出範囲
Measur. range



KITAGAWA

プラグ
Plugs



6xM10取付ボルト (等配)
Tighten bolts
(Equi-spaced)

C (1:3)

バルーフリニアセンサ仕様
BALLUFF LINEAR SENSOR SPECIFICATIONS

型式 Type	BIP AD2-T030-02-S4
出力信号 Output voltage	0~10 V
検出範囲 Working range	0~30 mm
繰返し性能 Repeat accuracy	±100 μm
保存周囲温度 Ambient temperature	-25~85°C

Belong 付属品

- 六角穴付ボルト M10x80 : 6ヶ
Hex. socket head cap screw M10x80 : 6pcs.
- ホースニップル φ33 : 2ヶ
Hose nipple φ33 : 2pcs.
- 六角穴付ボルト M5x8 : 2ヶ
Hex. socket head cap screw M5x8 : 2pcs.

SPECIFICATIONS

PISTON DIA	165 mm	
PISTON STROKE	23 mm	
PISTON THRUST (OIL PRESSURE 3.3 MPa)	PUSH	45.3 kN
	PULL	43.0 kN
PISTON THRUST (OIL PRESSURE 4.0 MPa)	PUSH	56.4 kN
	PULL	53.6 kN
MAX. OPERATION PRESSURE	4.0 MPa	
MAX. SPEED	4500 min ⁻¹	
MASS	26.5 kg	
MOMENT OF INERTIA	0.084 kg·m ²	
OIL LEAKAGE ISO VG 32 50°C 3.0MPa	4.3 L/min	

For B-210
B-210用

CAREER		SCALE	TYPE	SR1675CBIP
APPROVAL	INSPECTION	DRW 3D	3:5	ROTARY HYDRAULIC CYLINDER
		DATE	3RD ANGLE	NAME SR1675CBIP OUTSIDE VIEW
Kitagawa Corporation		DATE	DRW NO.	61R298379 0 1/1 P