



NC ROTARY TABLE



WISE



CHUCK





NC ROTARY TABLE

NC円テーブル NC Rotary Table 取付機械適合表 Machine Compatibility

	取付 Mount	S300Xd1	S500Xd1	S700Xd1	W1000Xd1	F600X1
CK(R)160		○ P7	○	○	○	○
MK200		○ P7	○ P9	○ P11	○	○ P15
MK250		○	○	○	○ P13	×
GT200		○	○	○	○	○
GT250		○	○	○	○	×
RK201		○ P8	○ P9	○ P11	○ P13	○ P15
RKT180		△	△ P10	△ P12	△ P14	×
TT101		○ P8	○	○	○	○
TT140	正面 Front Mount	×	○	○	○	×
	右置 Right Mount	△	△ P10	△	○	×
TT150	正面 Front Mount	×	○	○	○	×
	右置 Right Mount	△	△	△	○	×
TT200	正面 Front Mount	×	×	×	×	×
	右置 Right Mount	×	△	△ P12	○ P14	×
TT251	正面 Front Mount	×	×	×	×	×
	右置 Right Mount	×	×	△	△	×
TW251	正面 Front Mount	×	×	△	○	×
	右置 Right Mount	×	×	×	×	×
TW2180		×	×	○	○	×

	取付 Mount	R450Xd1	← 低床 Low Floor Table Spec.	R650Xd1	← 低床 Low Floor Table Spec.
CK(R)160	両側 Both Palette	○ P16	○	△ P17	△
MK200	両側 Both Palette	※	※	○ P18	○
MK250	両側 Both Palette	×	×	○	○
GT200	両側 Both Palette	×	×	△	△
GT250	両側 Both Palette	×	×	△	△
RK201	両側 Both Palette	×	×	○	○
RKT180		×	×	×	×
TT101	両側 Both Palette	×	×	△ P18	△
TT140	両側 Both Palette	×	×	△	△
TT150		×	×	△	△

○ … ストローク制限無しで搭載可能
Can be mounted without stroke limit.

△ … S、W、Fタイプではストローク制限有、Rタイプではサブプレートが必要
For S, W and F type the stroke is limited. For R type the subplate is required.

×

※ … 特殊対応で搭載できますのでお問い合わせください
Please contact us as it can be installed with special modification.

ページ番号は搭載図が掲載されているページです
The page number is the page where the installation diagram is posted.

確認はカタログ作成時における弊社の保有する最新のデータに基づいておりますが、最終的にはお客様にて実機のデータでご確認ください。また、主軸ヘッド、刃物等と円テーブル等との干渉につきましては、機械メーカー様またはユーザー様にてご確認ください。

The confirmation of interference with machines is based on the latest data held by Kitagawa at the time of catalogue creation, but for more accuracy, please confirm them with the actual machine data. Also the interference between main spindle head or the tooling of machine and NC rotary table shall be checked by the machine manufacture or the customer.



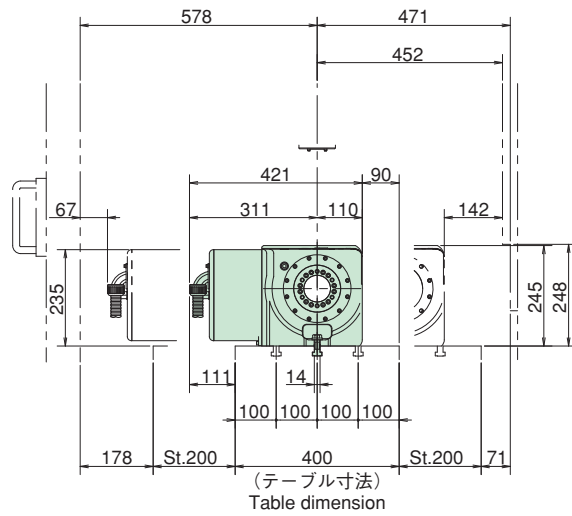
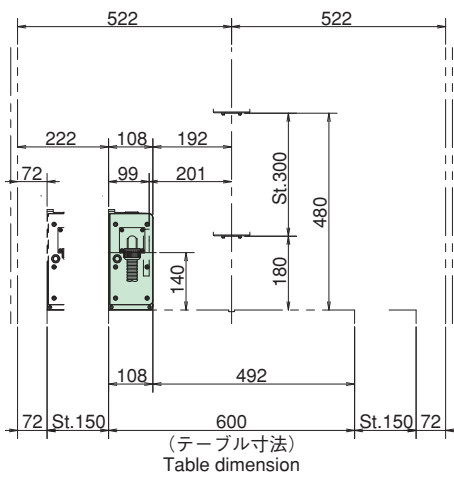
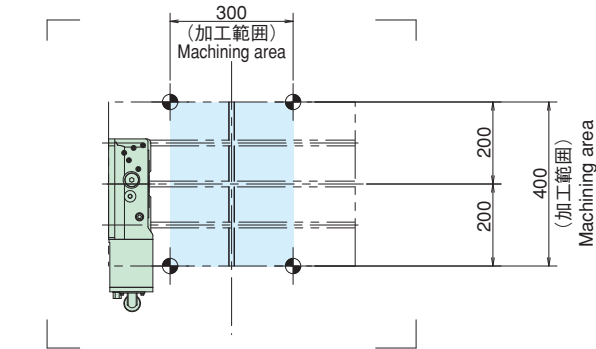
NC ROTARY TABLE

コンパクトマシンングセンタ **SPEEDIO**
Compact Machining Center

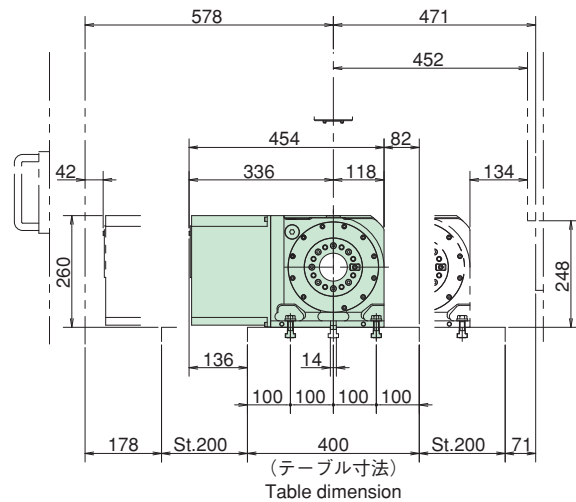
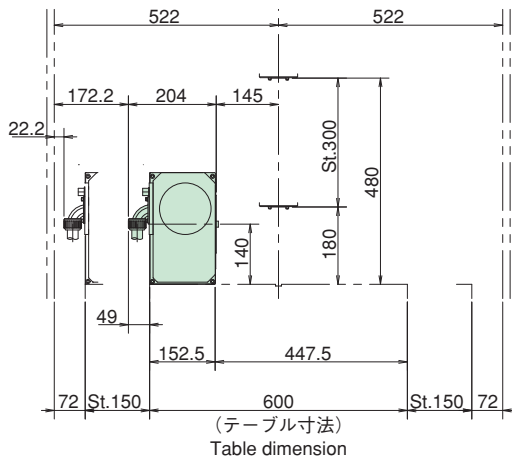
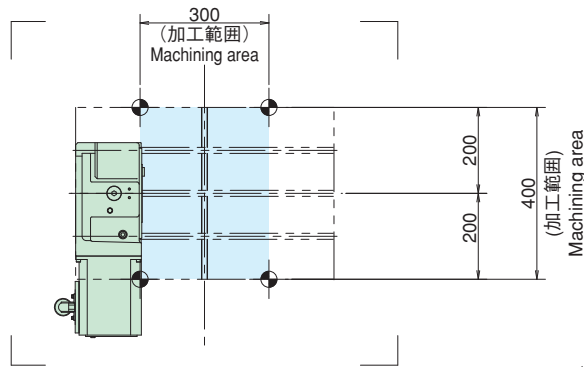
S300Xd1



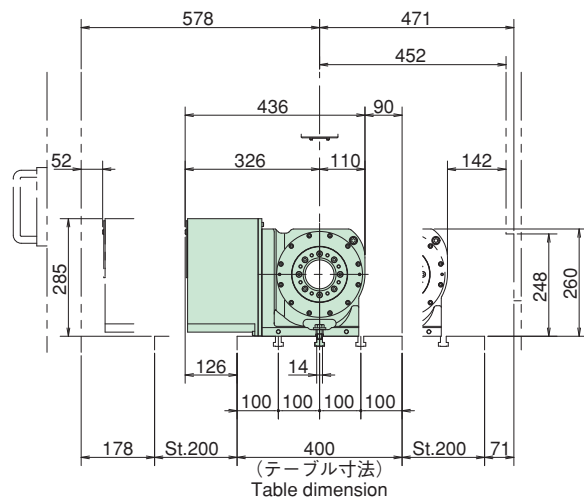
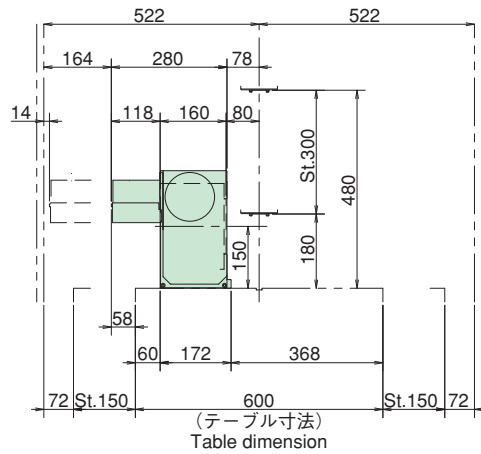
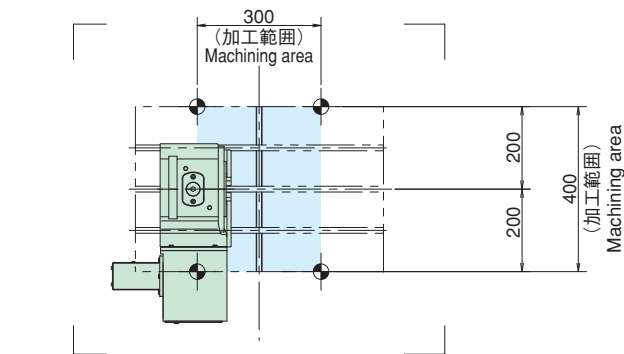
CK (R) 160LS



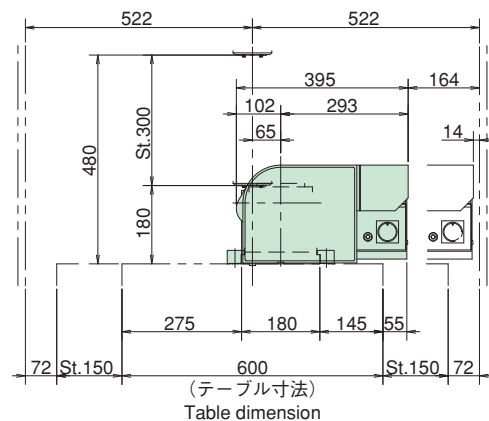
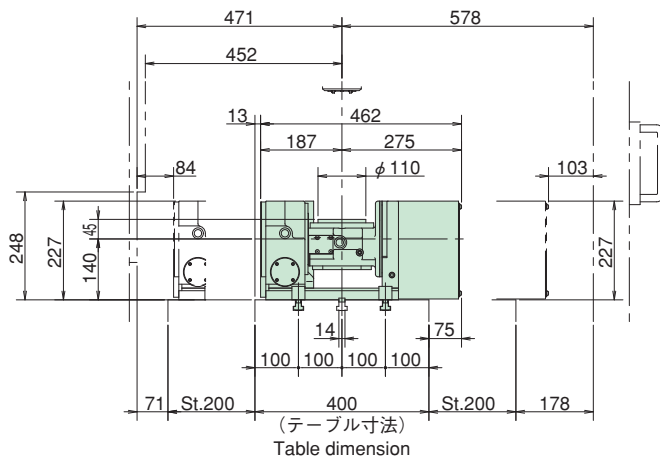
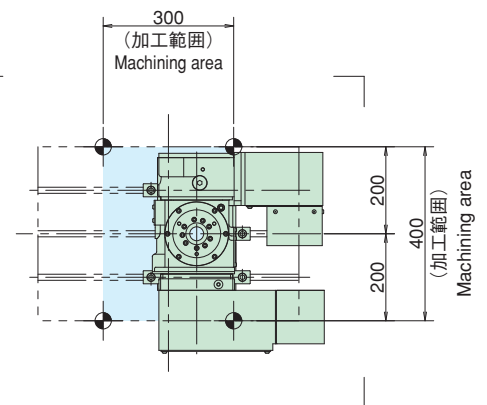
MK200LAS



RK201LAS



TT101ASS





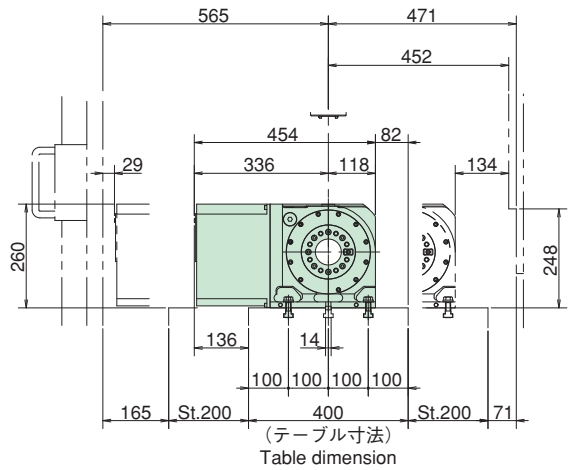
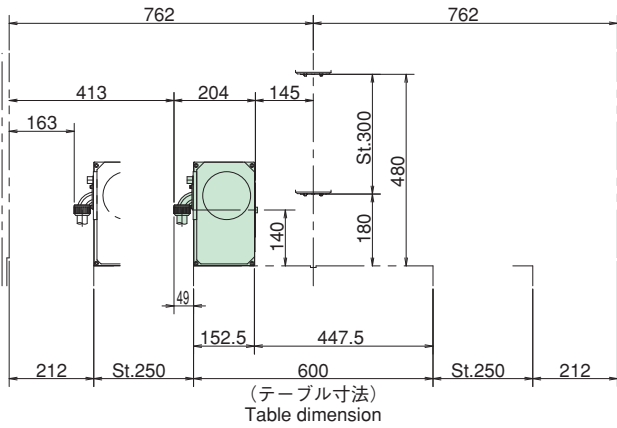
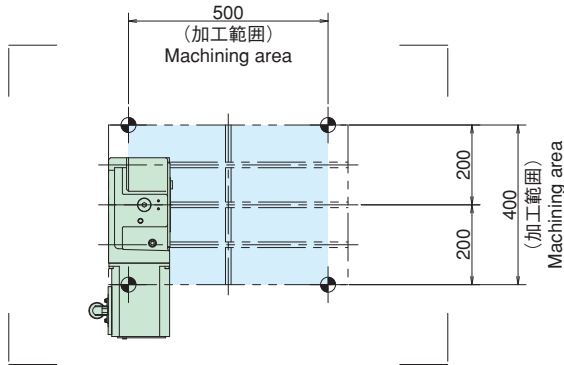
NC ROTARY TABLE

コンパクトマシンングセンタ *SPEEDIO*
Compact Machining Center

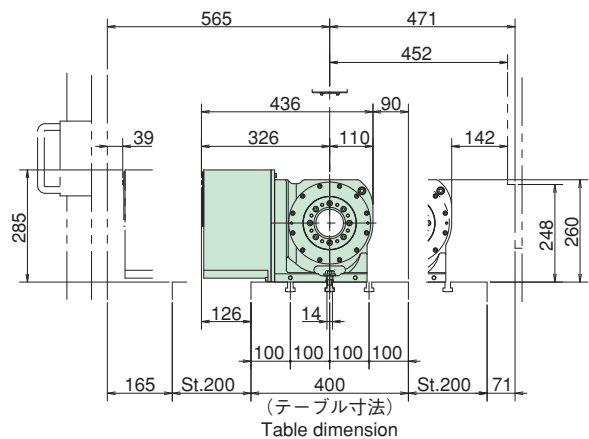
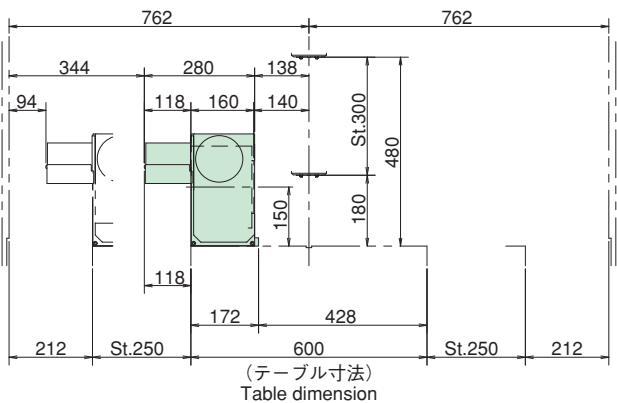
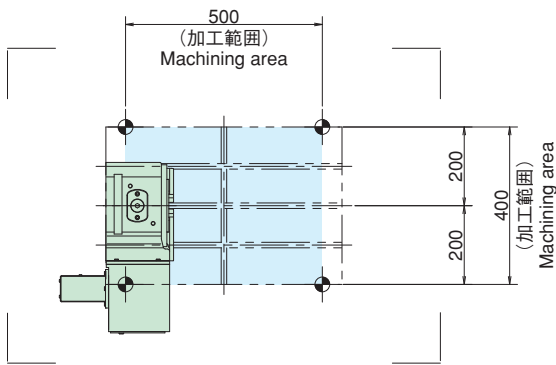
S500Xd1



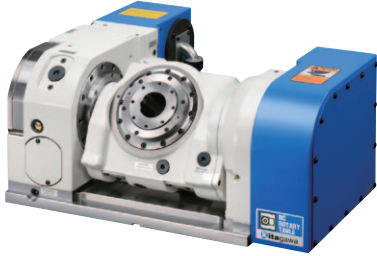
■ MK200LAS



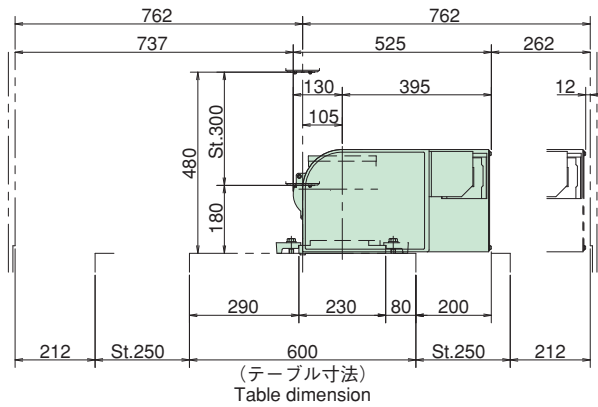
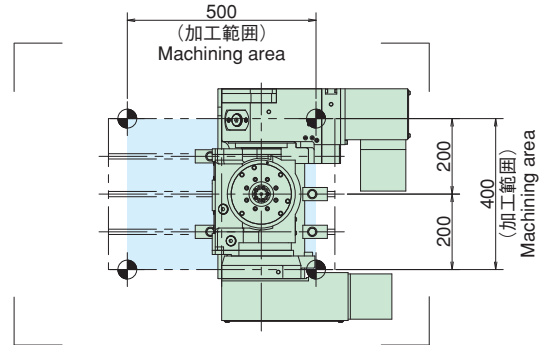
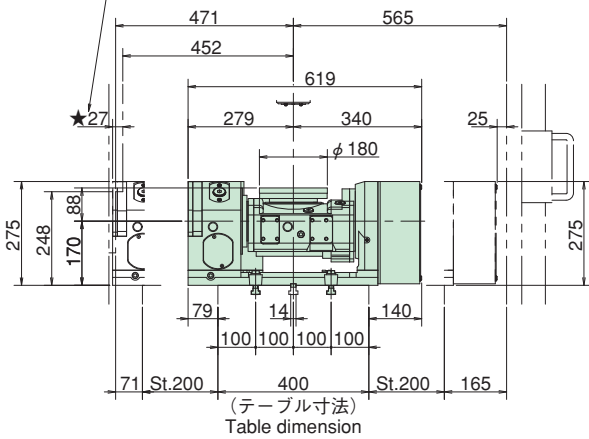
■ RK201LAS



RKT180S



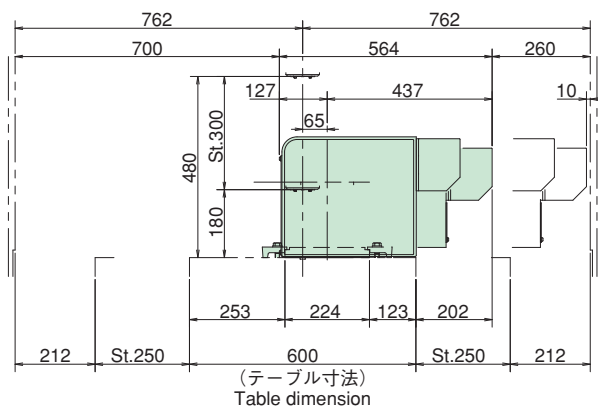
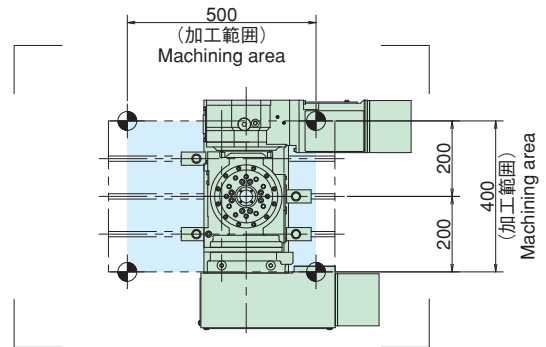
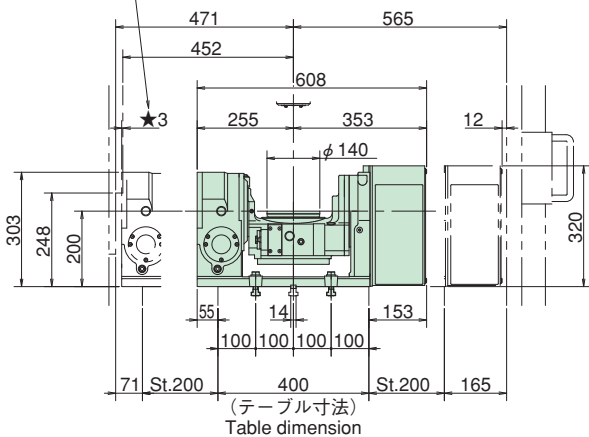
Y軸をフルストロークまで移動すると
27mm干渉しますので、ストローク制限が必要となります。
Stroke limitation is required as there is 27mm
interference at Y full stroke.



TT140AS (右置き) (Right Mount)



Y軸をフルストロークまで移動すると
3mm干渉しますので、ストローク制限が必要となります。
Stroke limitation is required as there is 3mm
interference at Y full stroke.



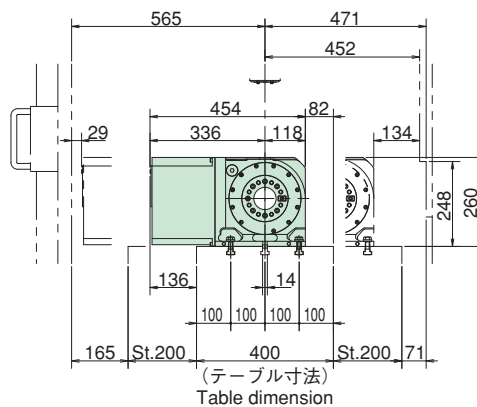
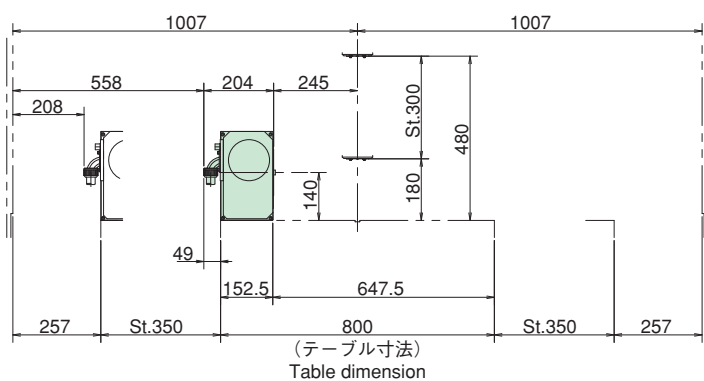
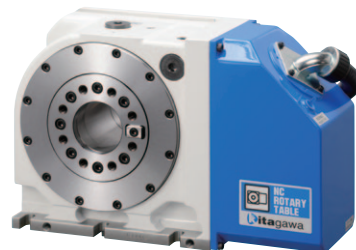
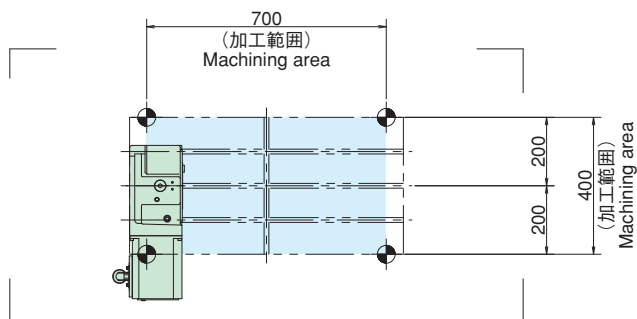


コンパクトマシンングセンタ **SPEEDIO**
Compact Machining Center

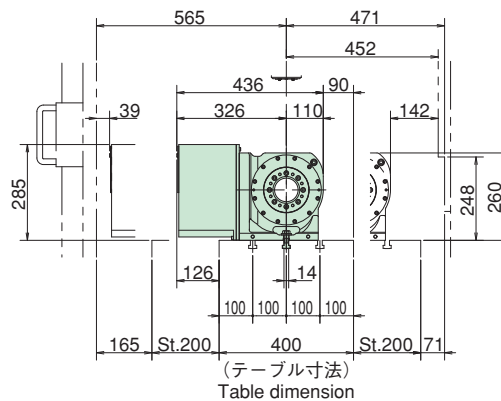
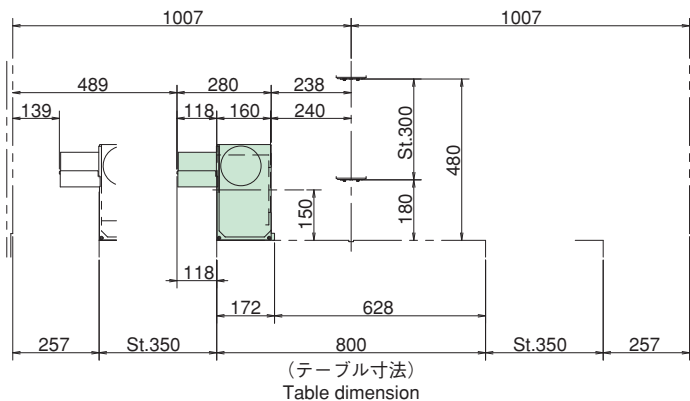
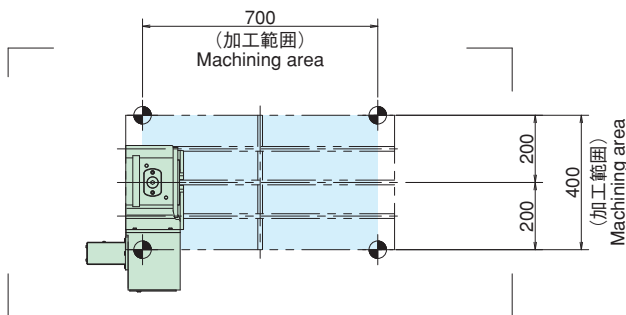
S700Xd1



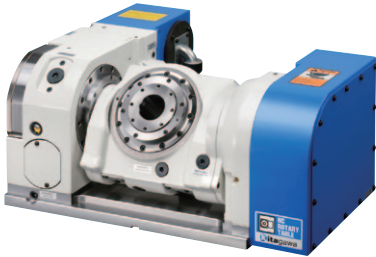
MK200LAS



RK201LAS

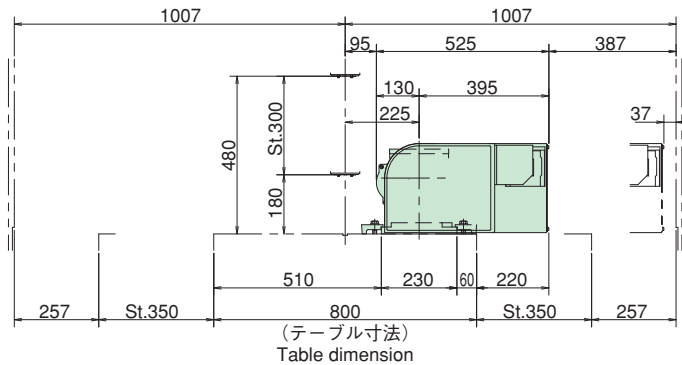
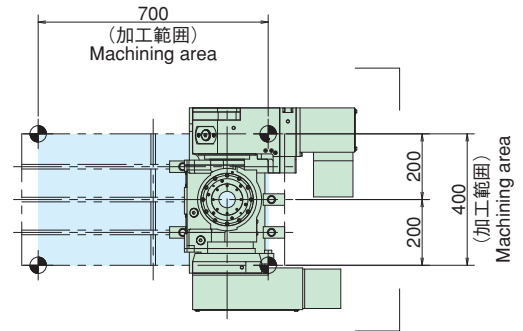
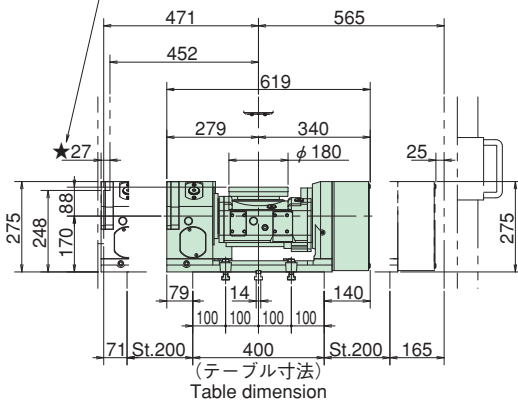


RKT180S



Y軸をフルストロークまで移動すると
27mm干渉しますので、ストローク制限が必要となります。

Stroke limitation is required as there is 27mm
interference at Y full stroke.

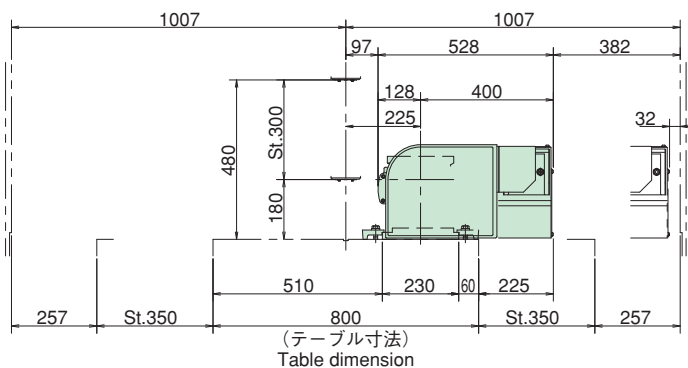
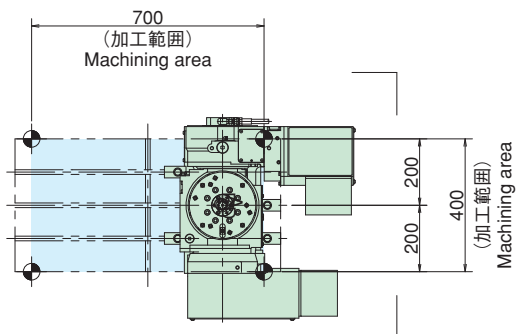
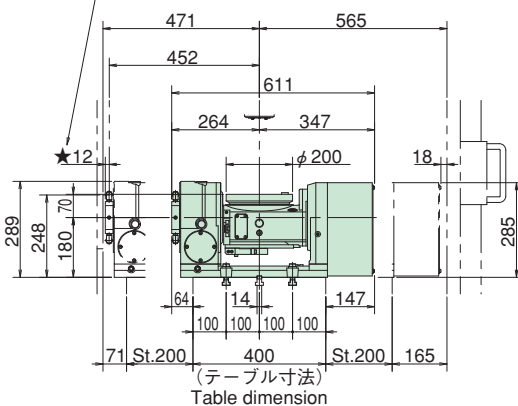


TT200AS



Y軸をフルストロークまで移動すると
12mm干渉しますので、ストローク制限が必要となります。

Stroke limitation is required as there is 12mm
interference at Y full stroke.





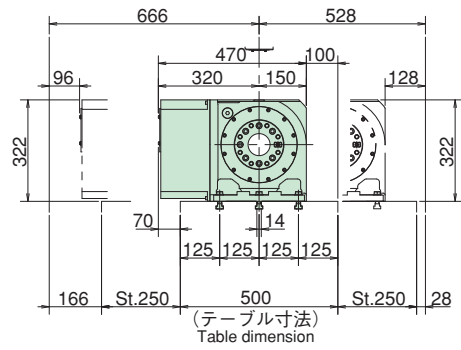
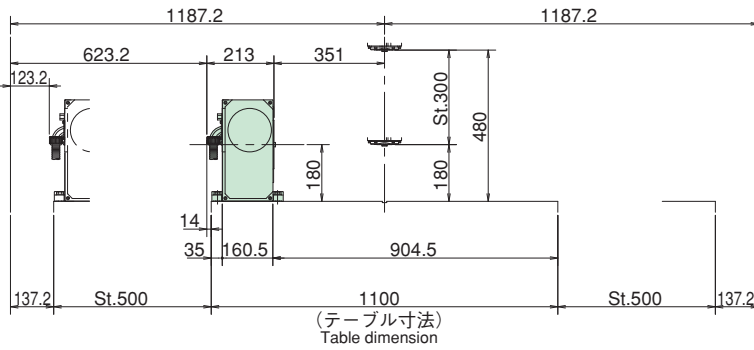
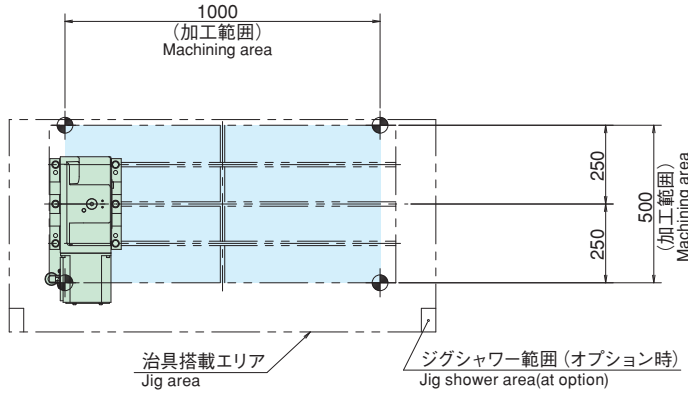
NC ROTARY TABLE

コンパクトマシンングセンタ *SPEEDIO*
Compact Machining Center

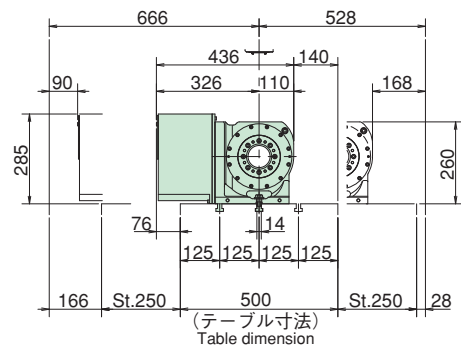
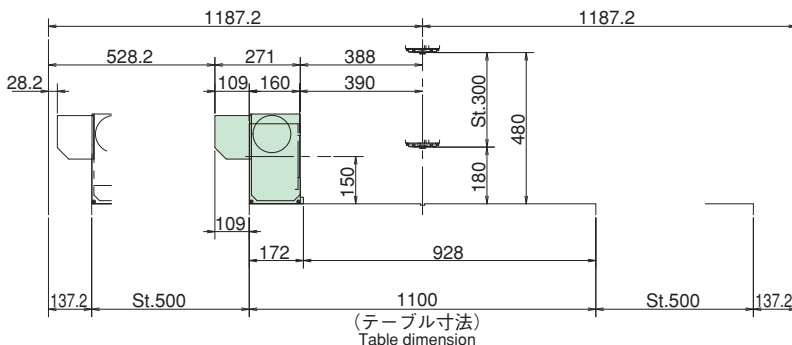
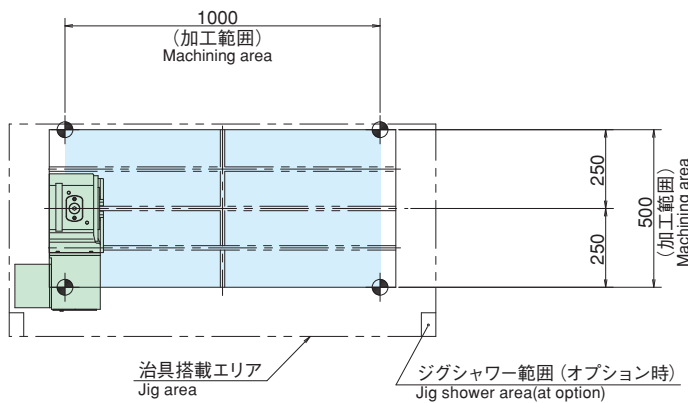
W1000Xd1



■ MK250LAS



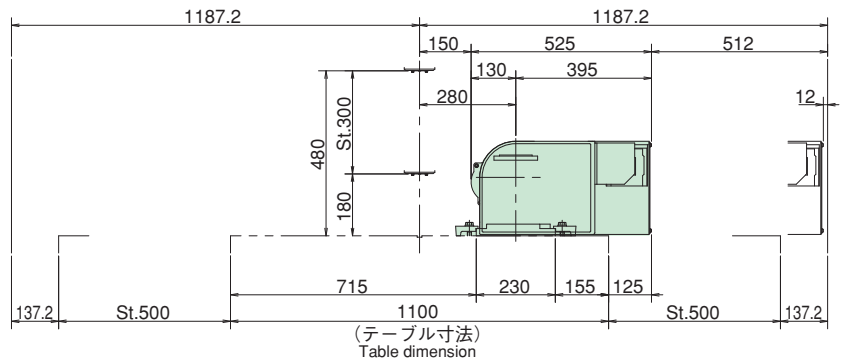
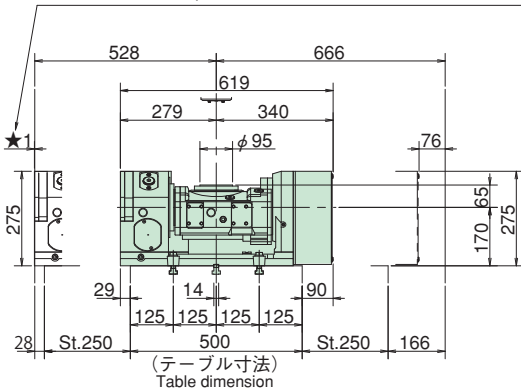
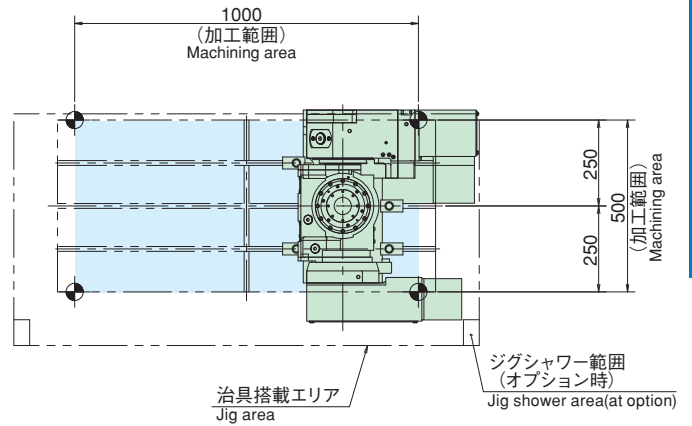
■ RK201LAS



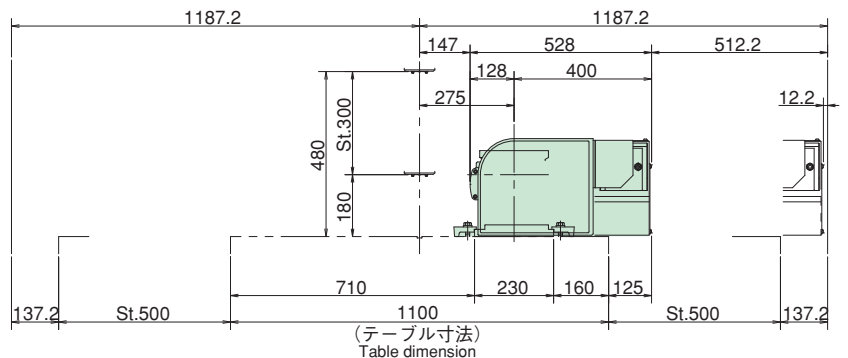
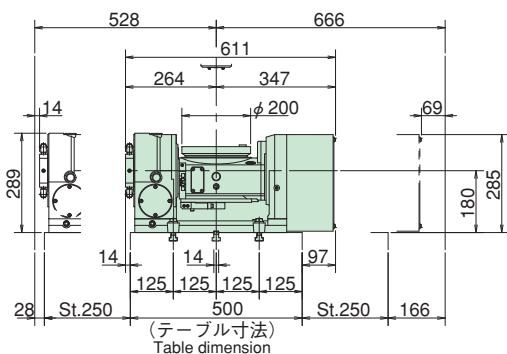
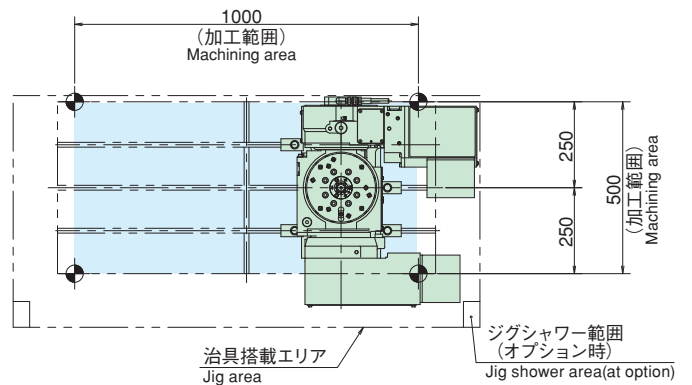
RKT180S



Y軸をフルストロークまで移動すると1mm干渉しますので、ストローク制限が必要となります。
Stroke limitation is required as there is 1mm interference at Y full stroke.



TT200AS

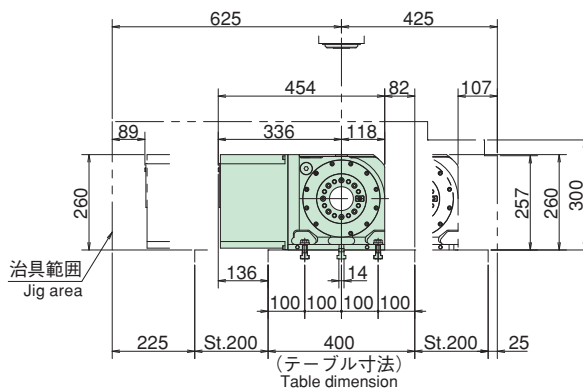
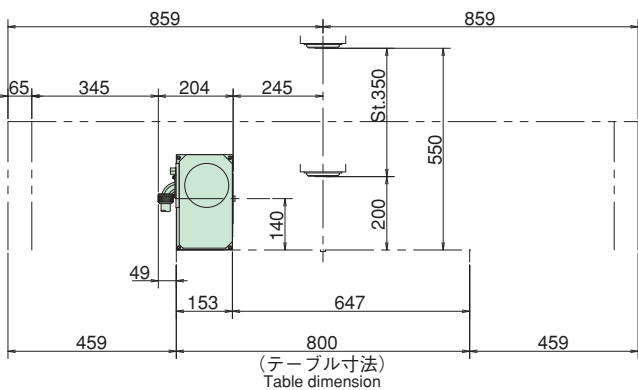
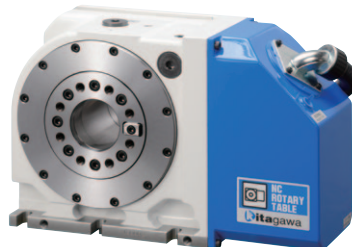
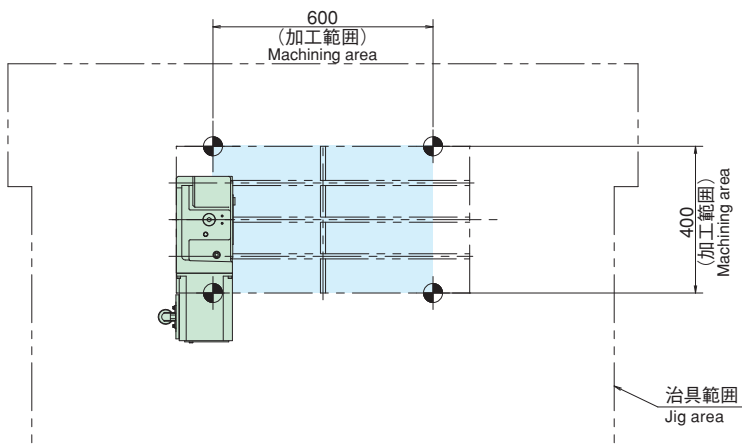




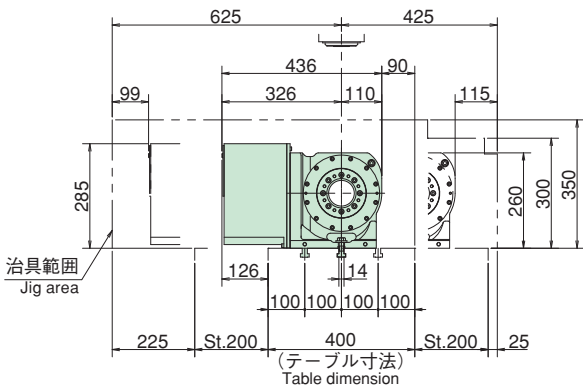
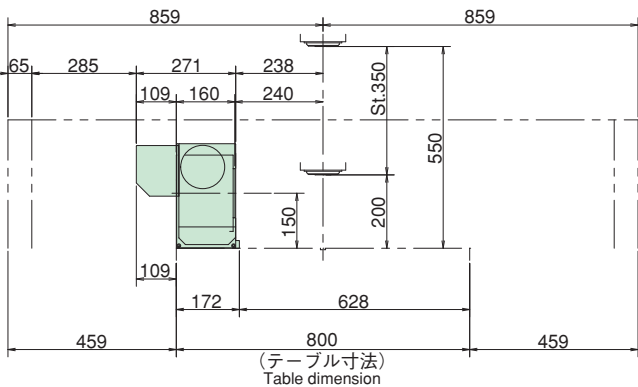
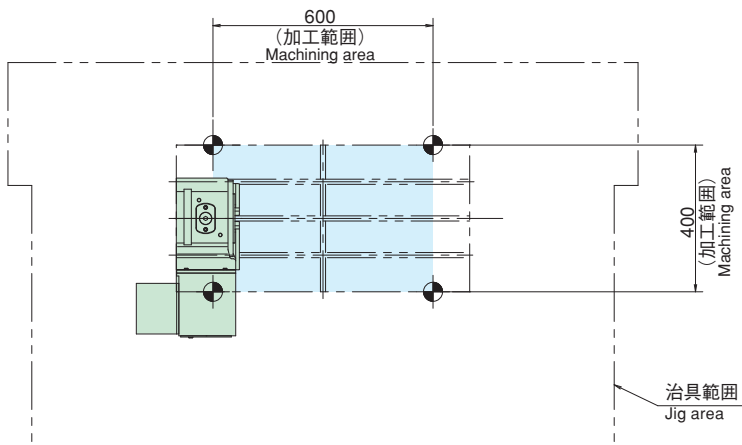
コンパクトマシンングセンタ *SPEEDIO* Compact Machining Center **F600X1**



MK200LAS



RK201LAS





NC ROTARY TABLE

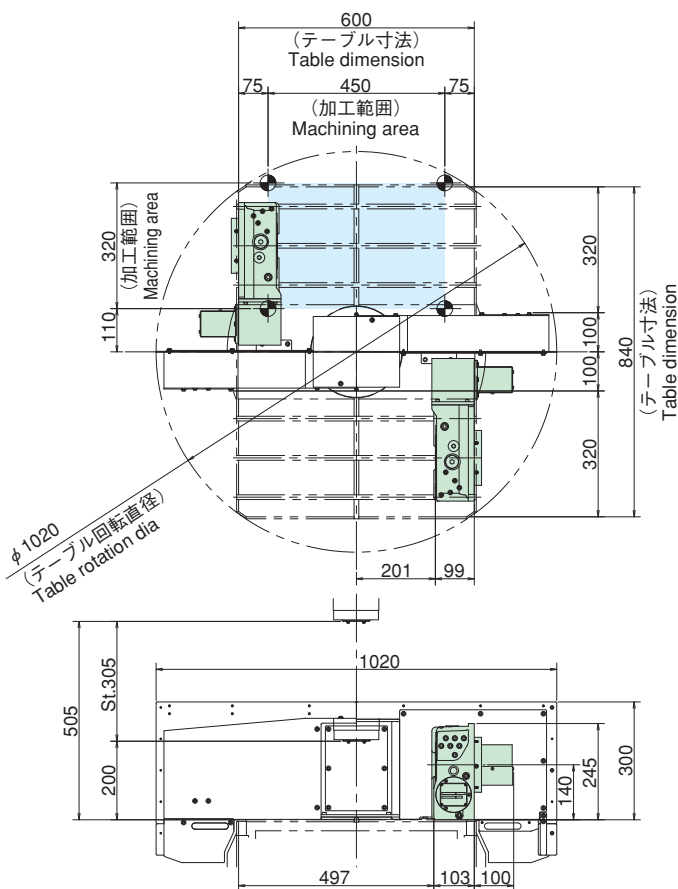
コンパクトマシンングセンタ **SPEEDIO**
Compact Machining Center

R450Xd1



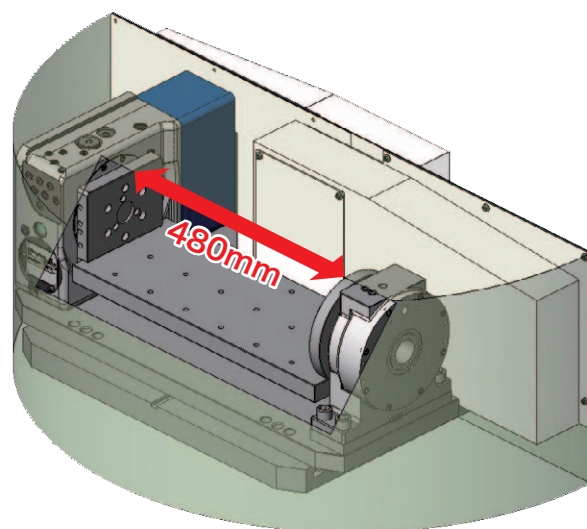
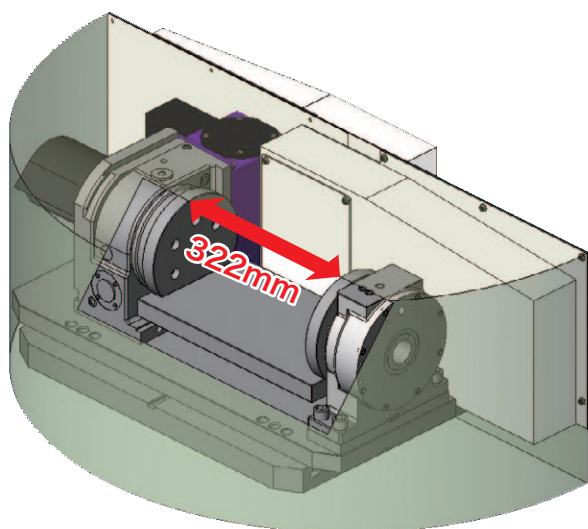
NC回転テーブル NC ROTARY TABLE

CK (R) 160LS



従来型の場合 Conventional model

CK160の場合 CK160



なんと!! 治具エリアが約50%UP!!

Wow !! Jig area is approaching, 50% more !!

従来品では出来なかった機械X軸ストロークをフルに活用が可能!!
Enables full X stroke!



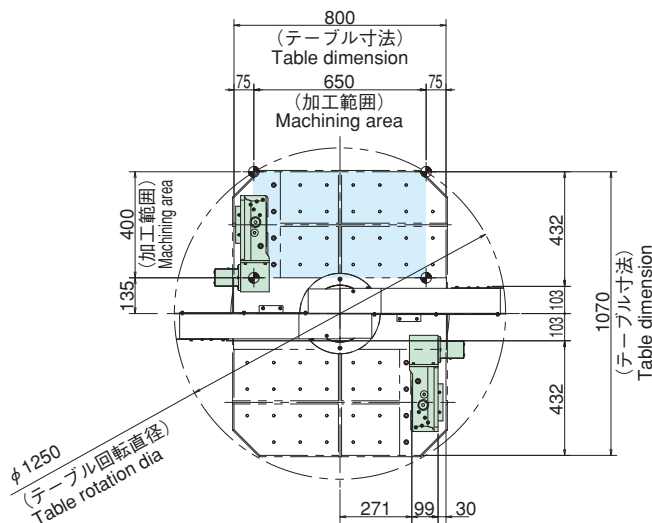
NC ROTARY TABLE

コンパクトマシニングセンタ **SPEEDIO**
Compact Machining Center

R650Xd1

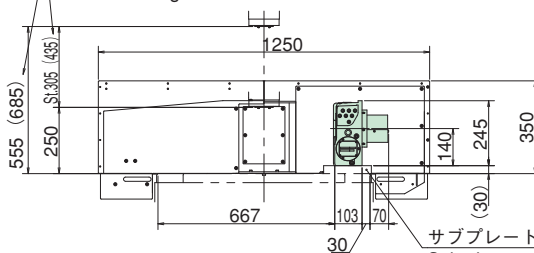


CK (R) 160



() 寸法は工具マガジン40本仕様を示しています。

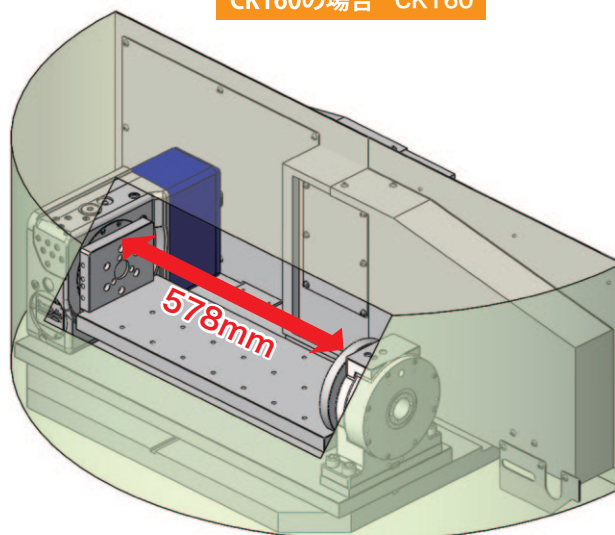
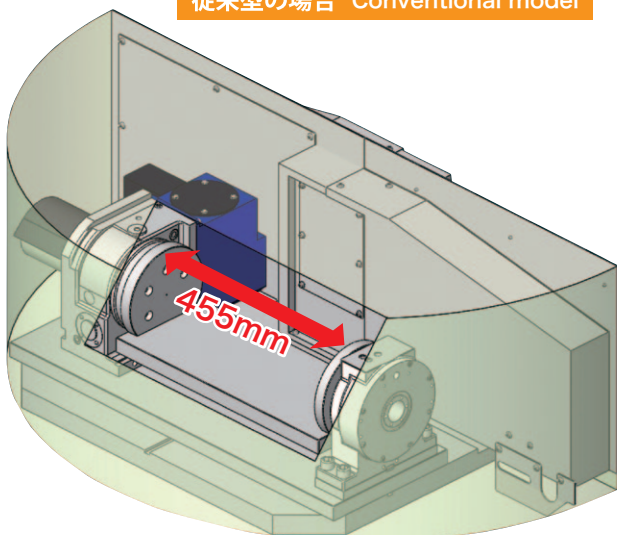
The dimension in () shows the specifications for 40 tool magazines.



サブプレート (客先手配及び取付)
Sub plate
(Customer must prepare and assemble)

従来型の場合 Conventional model

CK160の場合 CK160

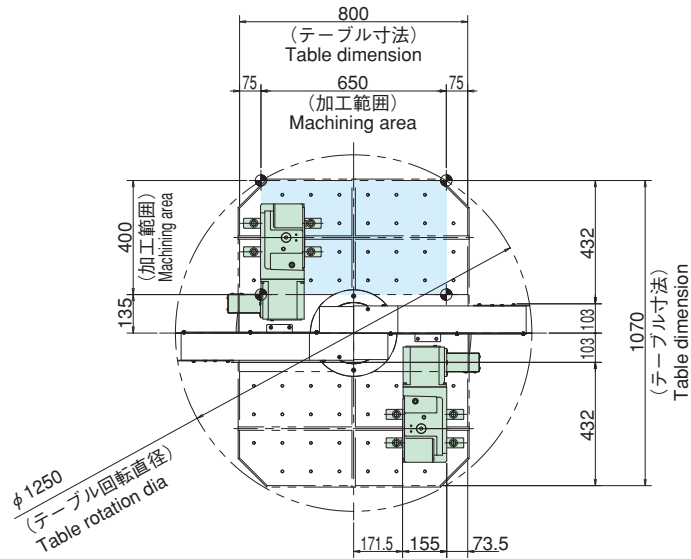


なんと!! 治具エリアが約30%UP!!

Wow !! Jig area is approaching, 30% more !!

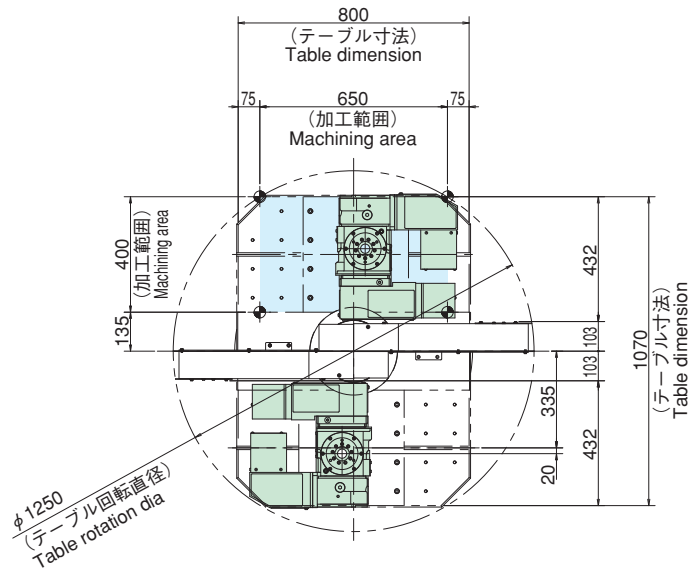
従来品では出来なかった機械X軸ストロークをフルに活用が可能!!
Enables full X stroke!

MK200LAS



() 寸法は工具マガジン40本仕様を示しています。
The dimension in () shows the specifications for 40 tool magazines.

TT101ASS



() 寸法は工具マガジン40本仕様を示しています。
The dimension in () shows the specifications for 40 tool magazines.

サブプレート (客先手配及び取付)
Sub plate (Customer must prepare and assemble)



America Contact

KITAGAWA - NORTHTECH INC.
Tel. +1 847-310-8787 Fax. +1 847-310-9484

301 E. Commerce Dr, Schaumburg, IL. 60173 USA
<https://www.kitagawa-usa.com>

Europe Contact

KITAGAWA EUROPE LTD.
Tel. +44 1725-514000 Fax. +44 1725-514001

KITAGAWA EUROPE GmbH
Tel. +49 2102-123-78-00 Fax. +49 2102-123-78-69

KITAGAWA EUROPE GmbH Poland Office
Tel. +48 607-39-8855

KITAGAWA EUROPE GmbH Czech Office
Tel. +420 603 856 122

KITAGAWA EUROPE GmbH Romania Office
Tel. +40 727-770-329

KITAGAWA EUROPE GmbH Hungary Office
Tel. +36 30-510-3550

Unit 1 The Headlands, Downton, Salisbury, Wiltshire SP5 3JJ, United Kingdom
<https://www.kitagawa.global/en>

Borsigstrasse 3, 40880, Ratingen Germany
<https://www.kitagawa.global/de>

44-240 Zory, ul. Niepodleglosci 3 Poland
<https://www.kitagawa.global/pl>

Purkynova 125, 612 00 Brno, Czech Republic
<https://www.kitagawa.global/cz>

Strada Heliului 15, Bucharest 1, 013991, Romania
<https://www.kitagawa.global/ro>

Dery T.u.5, H-9024 Győr, Hungary
<https://www.kitagawa.global/hu>

Asia Contact

KITAGAWA INDIA PVT LTD.
Tel. +91 80-2976-5200 Fax. +91 80-2976-5205

KITAGAWA (THAILAND) CO., LTD. Bangkok Branch
Tel. +66 2-712-7479 Fax. +66 2-712-7481

Kitagawa Corporation (Shanghai)
Tel. +86 21-6295-5772 Fax. +86 21-6295-5792

Kitagawa Corporation (Shanghai) Guangzhou Office
Tel. +86 20-2885-5276

DEAMARK LIMITED
Tel. +886 2-2393-1221 Fax. +886 2-2395-1231

KITAGAWA KOREA AGENT CO., LTD.
Tel. +82 2-2026-2222 Fax. +82 2-2026-2113

Plot No.42, 2nd Phase Jigani Industrial Area, Jigani, Bangalore – 560105, Karnataka, India
<https://www.kitagawa.global/in>

9th FL, Home Place Office Building, 283/43 Sukhumvit 55 Rd. (Thonglor 13), Klongton-Nua, Wattana, Bangkok 10110, Thailand
<https://www.smri.asia/jp/kitagawa/>

Room 308 3F Building B. Far East International Plaza, No.317 Xian Xia Road, Chang Ning, Shanghai, 200051, China
<https://www.kitagawa.com.cn>

B07, 25/F, West Tower, Yangcheng International Trading Centre, No.122, East Tiyu Road, Tianhe District, Guangzhou, China

No. 6, Lane 5, Lin Sen North Road, Taipei, Taiwan
<https://www.deamark.com.tw/>

803 Ho, B-Dong, Woolim Lion's Valley, 371-28 Gasan-Dong, Gumcheon-Gu, Seoul, Korea
<http://www.kitagawa.co.kr>

Oceania Contact

DIMAC TOOLING PTY.LTD.
Tel. +61 3-9561-6155 Fax. +61 3-9561-6705

69-71 Williams Rd, Dandenong South, Victoria, 3175 Australia
<https://www.dimac.com.au>

日本語対応可能
Japanese speaker available



<https://www.kiw.co.jp>
<https://www.kitagawa.com>
<https://www.kitagawa.com.cn>

株式会社 北川鉄工所 Kitagawa Global hand Company
Kitagawa Corporation

本社 HEAD OFFICE	広島県府中市元町77-1 77-1 Motomachi, Fuchu-shi, Hiroshima, 726-8610, Japan	〒726-8610	Tel. (0847) 40-0561 Tel. +81 847-40-0561	Fax. (0847) 45-8911 Fax. +81 847-45-8911
東京営業課	埼玉県さいたま市北区吉野町1-405-1	〒331-9634	Tel. (048) 667-3469	Fax. (048) 663-4678
仙台支店駐在	宮城県仙台市若林区大和町4-15-13	〒984-0042	Tel. (022) 232-6732 (代)	Fax. (022) 232-6739
名古屋営業課	愛知県名古屋市中川区上高畑2-62	〒454-0873	Tel. (052) 363-0371 (代)	Fax. (052) 362-0690
大阪営業課	大阪府大阪市住之江区北加賀屋3-2-9	〒559-0011	Tel. (06) 6685-9065 (代)	Fax. (06) 6684-2025
広島営業課	広島県府中市元町77-1	〒726-8610	Tel. (0847) 40-0541	Fax. (0847) 46-1721
九州支店駐在	福岡県福岡市博多区板付7-6-39	〒812-0888	Tel. (092) 501-2102 (代)	Fax. (092) 501-2103
海外営業課	広島県府中市元町77-1	〒726-8610	Tel. (0847) 40-0526	Fax. (0847) 45-8911

・仕様・外観は改良のため、予告なく変更することがあります。 ・カタログと実際の商品の色とは印刷の関係で多少異なる場合もあります。
 ・カタログ記載内容 / 令和4年9月
 ・本カタログ記載の商品は「外国為替及び外国貿易法」の「輸出貿易管理令」及び「外国為替令」の規制対象貨物です。
 同法に基づき、経済産業省大臣による輸出許可が必要となる場合がございます。日本国外へ持ち出される場合は、あらかじめ当社にご相談ください。
 ・ Specifications and outside appearance are subject to change without notice due to ongoing research and development. ・ The color of the actual product may be different from the catalogue's due to printing matters.
 ・ Catalogue contents as of 2022.9
 ・ The products herein are controlled under Japanese Foreign Exchange and Foreign Trade Control Act.
 In the event of importing and/or exporting the products, you are obliged to consult KITAGAWA as well as your government for the related regulation prior to any transaction.