

1

2

3

4

5

6

(吊りボルト用)  
(EYE BOLT)

仕様 SPECIFICATIONS	
口金の開き CLAMPING RANGE	0~300mm
締付トルク TIGHTENING TORQUE	
締付けレンジ CLAMP RANGE	0 10KN
	1 22KN
	2 38KN
	3 54KN
	4 70KN
製品質量 MASS OF POWER VISE	100kg

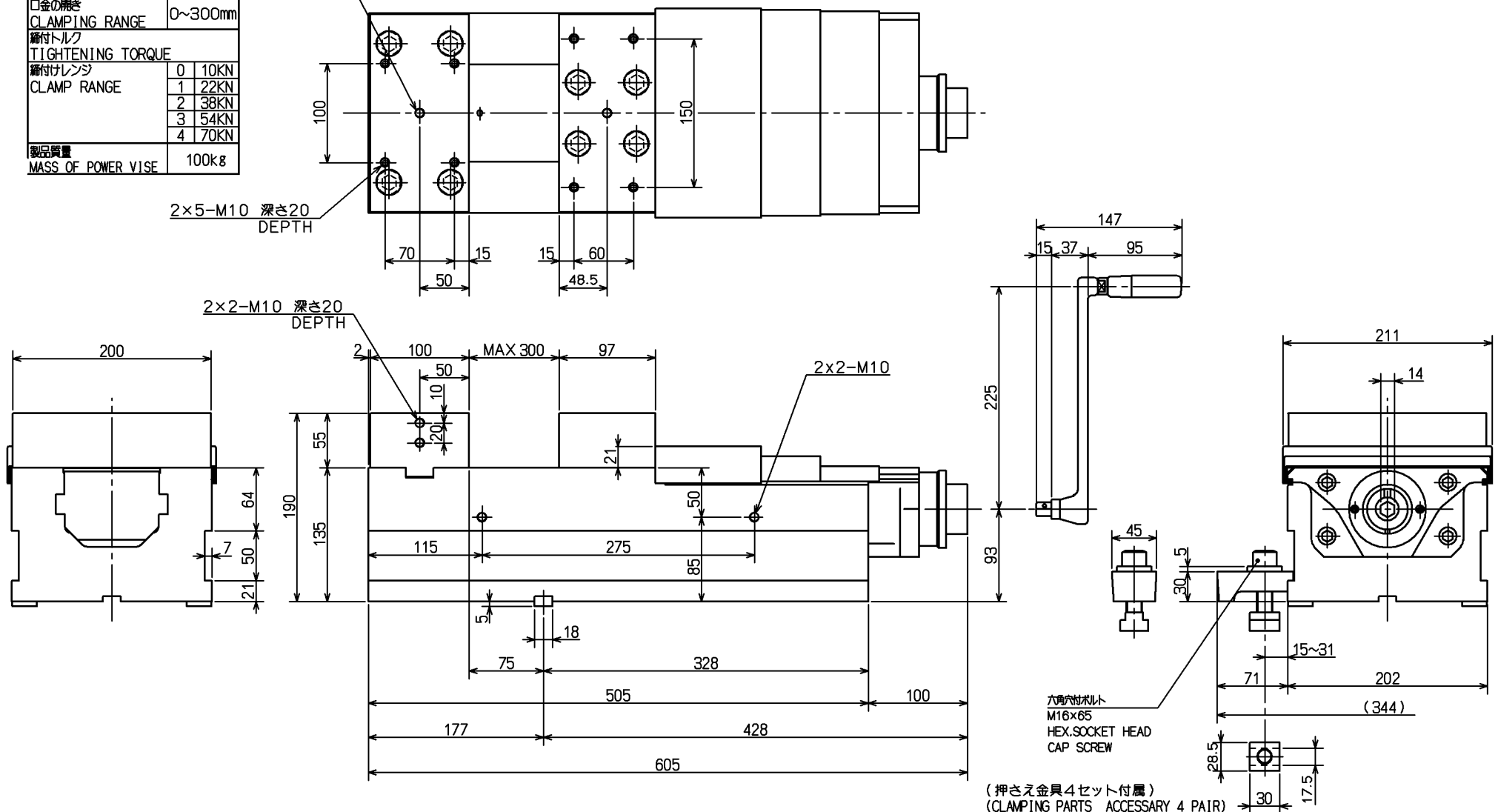
2×5-M10 深さ20  
DEPTH

2×2-M10 深さ20  
DEPTH

2×2-M10

六角穴付ボルト  
M16×65  
HEX. SOCKET HEAD  
CAP SCREW

(押さえ金具4セット付属)  
(CLAMPING PARTS ACCESSARY 4 PAIR)



CAREER		SCALE	TYPE	VQX200N	WEIGHT	kg
		1:4	パワーバイス POWER VISE			
MANAGER	CHIEF	DRAWN BY	NAME	VQX200N ガイキ VQX200N OUTSIDE VIEW		
KITAGAWA IRON WORKS CO., LTD.		DATE	DRW NO.	61M	39	6409