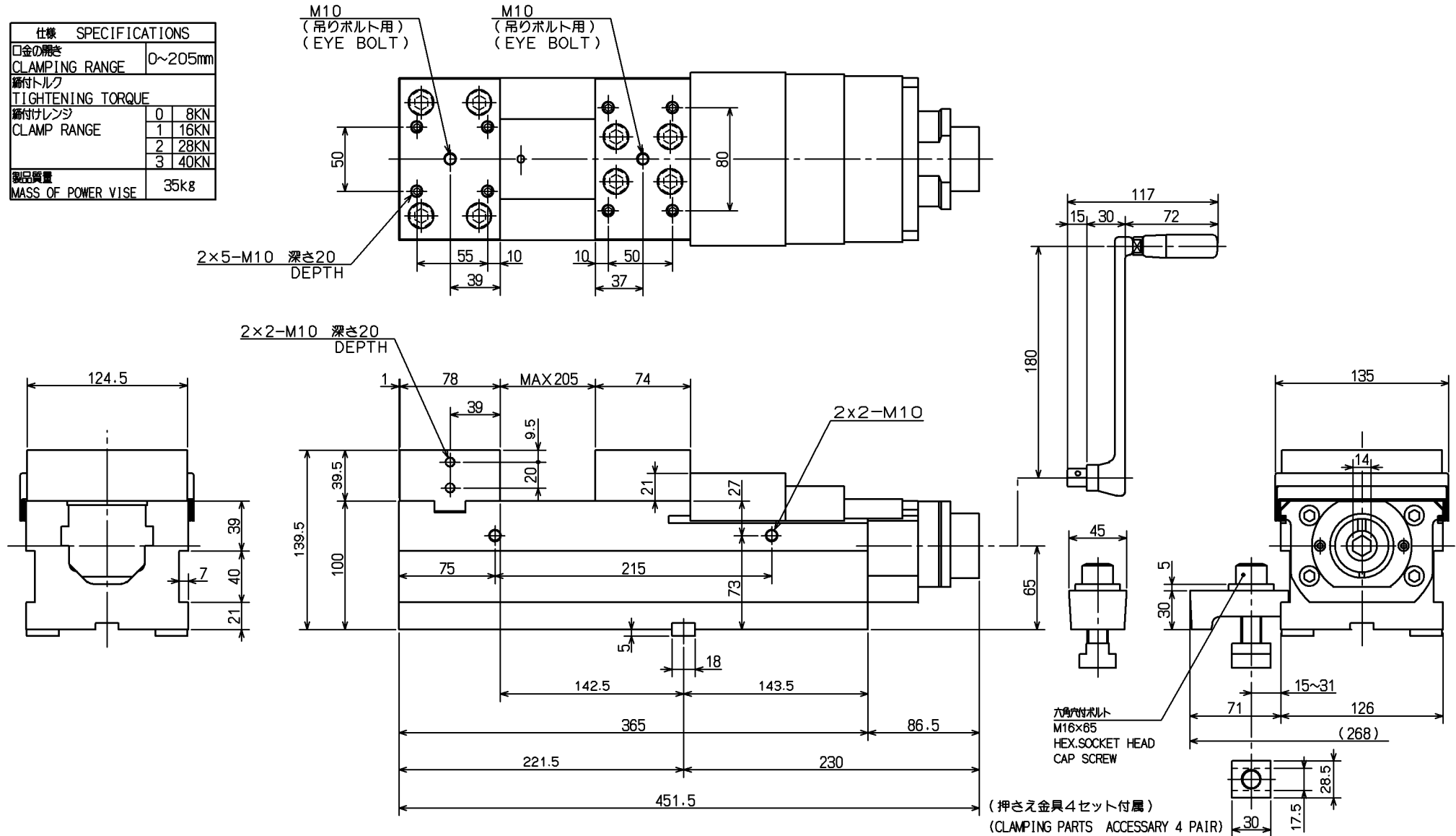


| 仕様 SPECIFICATIONS | |
|----------------------------|---------|
| 口金の開き CLAMPING RANGE | 0~205mm |
| 締付トルク TIGHTENING TORQUE | |
| 締付けレンジ CLAMP RANGE | 0 8KN |
| | 1 16KN |
| | 2 28KN |
| | 3 40KN |
| 製品質量 MASS OF POWER VISE | 35kg |



| | | | | | | |
|-------------------------------|-------|----------|-----------|---|--------|------|
| CAREER | | SCALE | TYPE | VQX125N-15 | WEIGHT | kg |
| MANAGER | CHIEF | DRAWN BY | NAME | パワーバイス POWER VISE | | |
| | | | 3RD ANGLE | VQX125N-15 ガイキ VQX125N-15 OUTSIDE VIEW | | |
| KITAGAWA IRON WORKS CO., LTD. | | DATE | DRW NO. | 61M | 39 | 6966 |