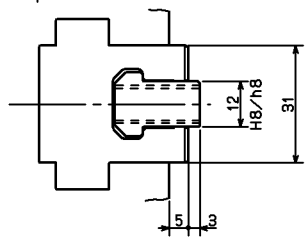


2-Rc1/8
 (マルチプレートに取付以外は
 止検とする)
 (WHEN SETTING ON MULTI-PLATE
 THIS SOCKET SET SCREW MUST BE
 TAKEN OFF.)
 2-Rc1/4



SPECIFICATIONS	
仕様	
PLUNGER STROKE プラグストローク	15 mm
JAW STROKE (IN DIA) ジョーstrook (直径で)	5.2 mm
MAX GRIPPING FORCE 最大把持力 (ON AIR PRESSURE OF 0.6 MPa) (ON AIR PRESSURE OF 0.6 MPa)	21 kN (2140 kgf)
MAX PERMISSIBLE AIR PRESS 許容最大エア圧力	0.6 MPa (6 kgf/cm ²)
AIR CONSUMPTION (PER 10mm OF PLUNGER STROKE ON PRESSURE OF 0.6MPa) 消費空気量 (プラグストローク10mm@0.6MPa時)	1.04 Nℓ
MASS 質量	15 kg

CAREER			SCALE	TYPE	AT06	WEIGHT	kg
MANAGER	CHIEF	DRAWN BY	1:1	NAME	ワークグripper 6		
KITAGAWA IRON WORKS CO.,LTD.			3RD ANGLE	DATE	AT06 ガイガイ OUTSIDE VIEW		
				DRW NO.	61P-25-5277	4	